

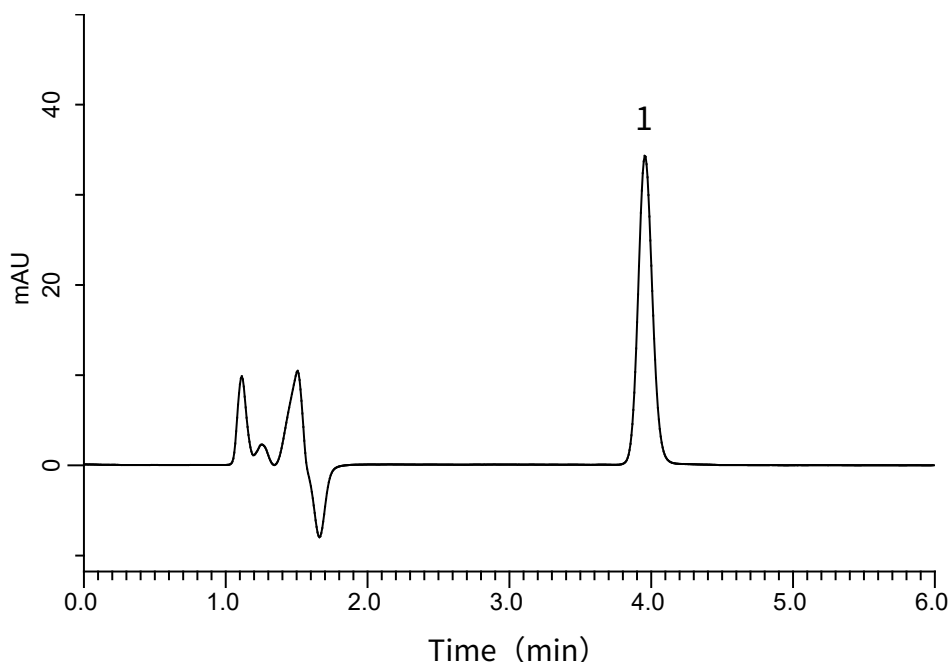
# InertSearch™ for LC

Inertsil® Applications

## Analysis of Donepezil hydrochloride

(Under the Condition of Japanese Pharmacopoeia, Donepezil hydrochloride tablets)

Data No. LB102-0894



### Conditions

**System** : GL-7400 HPLC system  
**Column** : Inertsil ODS-2 (5 $\mu$ m, 150 x 4.6 mm I.D.)  
**Column Cat. No.** : 5020-01124  
**Eluent** : A) CH<sub>3</sub>CN  
          : B) H<sub>2</sub>O  
          : C) HClO<sub>4</sub>  
          : A/B/C = 350/650/1, v/v/v  
**Flow rate** : 1.25 mL/min  
**Col. Temp.** : 35 °C  
**Detection** : UV 271 nm (GL-7452A PDA Detector)  
**Injection Vol.** : 50  $\mu$ L  
**Sample** : Standard

### Analyte:

1. Donepezil hydrochloride 3.3 mg/L

Theoretical plates : 7,311 ( $\geq$  5,000)  
Tailing factor : 1.08 ( $\leq$  1.5)  
RSD of the  
peak area (%) (n=6) : 0.37 ( $\leq$  1.0)