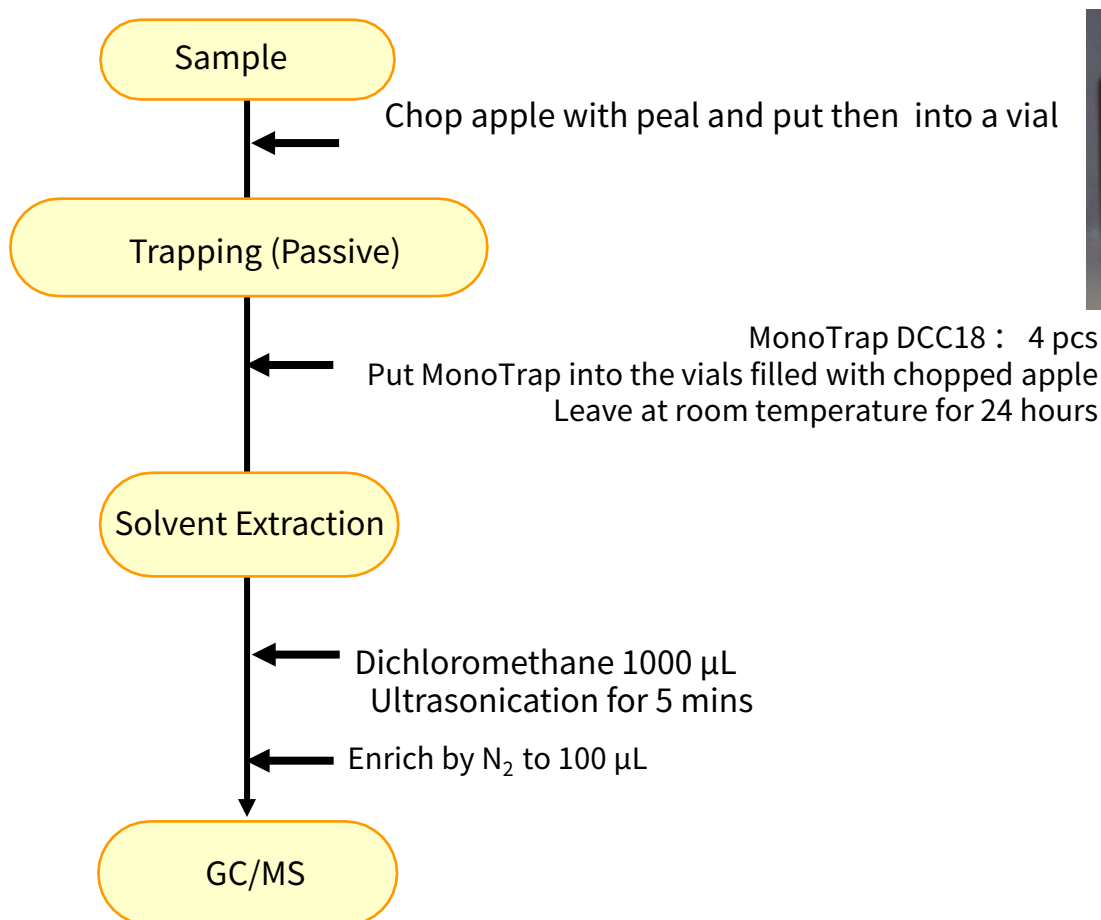


MonoTrap is a hybrid novel adsorbent that combines a large surface area and the properties of silica gel, activated carbon, and ODS. In this study, we used MonoTrap DCC18 (with activated carbon) to perform simple enrichment analyses of flavor components in peeled apple. We were able to easily analyze the enrichment by simple operation of placing it in a vial with the sample. Due to the large surface area, high sensitivity of many information was obtained even in solvent extraction, where sample loading is large and dilution is a concern.

Column : InertCap Pure-WAX 0.25 mm I.D. × 30 m df=0.25 μm

Protocol



GC Condition : SHIMADZU GC-2010, GCMS-QP2010

System : InertCap Pure-WAX Cat.No. 1010-68142

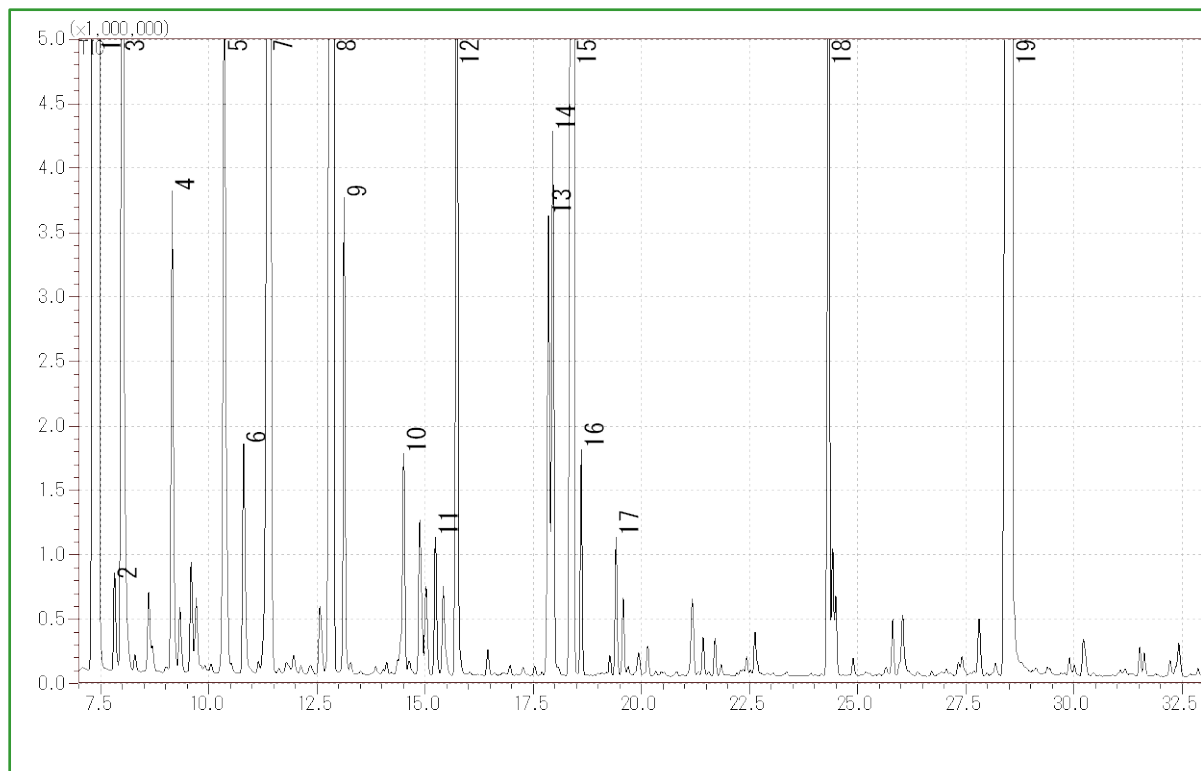
Column : 0.25 mm I.D. × 30 m df=0.25 μm

Column Temp : 40 °C (5 min) → 4 °C/min → 250 °C

Carrier Gas : He 65 kPa

Injection : Splitless, 1 μL 250 °C

Detection : MS Scan (*m/z*, 35-400)



- | | |
|-----------------------------------|---------------------------|
| 1 3-methylbutylacetate | 11 Hexyl propanoate |
| 2 Ethyl pentanoate | 12 1-Hexanol |
| 3 Propyl 2-methylbutanoate | 13 Butyl caproate |
| 4 Amyl acetate | 14 Hexyl butanoate |
| 5 2-methyl-1-butanol | 15 Hexyl 2-methylbutyrate |
| 6 Butyl butanoate | 16 Ethyl caprylate |
| 7 Ethyl caproate | 17 Isoamyl caproate |
| 8 Hexyl acetate | 18 Hexyl caproate |
| 9 2-Methylbutyl 2-methylbutanoate | 19 α -Farnesene |
| 10 Propyl caproate | |

GL Sciences disclaims any and all responsibility for any injury or damage which may be caused by this data directly or indirectly. We reserve the right to amend this information or data at any time and without any prior announcement.

GL Sciences Inc. Japan

22-1 Nishishinjuku 6-chome
Shinjuku-ku, Tokyo
163-1130, Japan

Phone: +81-3-5323-6620
Fax: +81-3-5323-6621
Email: world@glsc.co.jp
Web: www.glsciences.com

GL Sciences Inc. USA

4733 Torrance Blvd. Suite 255
Torrance, CA 90503
USA

Phone: +1-310-265-4424
Fax: +1-310-265-4425
Email: info@glsciencesinc.com
Web: www.glsciencesinc.com

GL Sciences B.V.

Dillenburgstraat 7C
5652AM, Eindhoven
The Netherlands

Phone: +31-40-254-9531
Email: info@glsciences.eu
Web: www.glsciences.eu

GL Sciences (Shanghai) Limited

Tower B, Room 2003
Far East International Plaza
No.317 Xianxia Road, Changning District
Shanghai, China 200051

Phone: +86-21-62782272
Email: contact@glsciences.com.cn
Web: www.glsciences.com.cn



International Distributors

Visit our Website at www.glsciences.com/distributors