

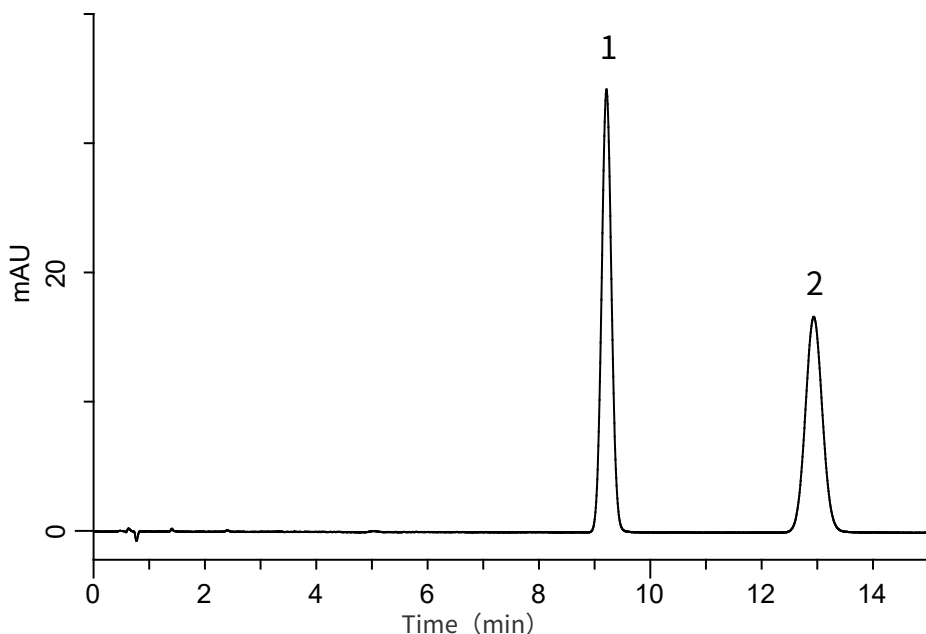
InertSearch™ for LC

Inertsil® Applications

Analysis of Candesartan cilexetil

(Under the Condition of the Japanese Pharmacopoeia,
Candesartan cilexetil Tablets)

Data No. LB203-0919



Conditions

System : GL-7400 HPLC system
Column : Inertsil ODS-3
(4 μm, 150 x 3.9 mm I.D.)
Column Cat. No. : 5020-87007
Eluent : A) CH₃CN
B) H₂O
C) CH₃COOH
A/B/C = 57/43/1, v/v/v
Flow Rate : 1.65 mL/min
Col. Temp. : 25 °C
Detection : UV 254 nm (GL-7452 PDA Detector)
Injection Vol. : 10 μL
Sample : Standard

Analyte:

1. Acenaphthene	125 mg/L
2. Candesartan cilexetil	40 mg/L
Resolution (1, 2)	: 8.3 (≥ 5)
RSD of the peak area ratio of 1 to 2 (%) (n=6)	: 0.17 (≤ 1.0)