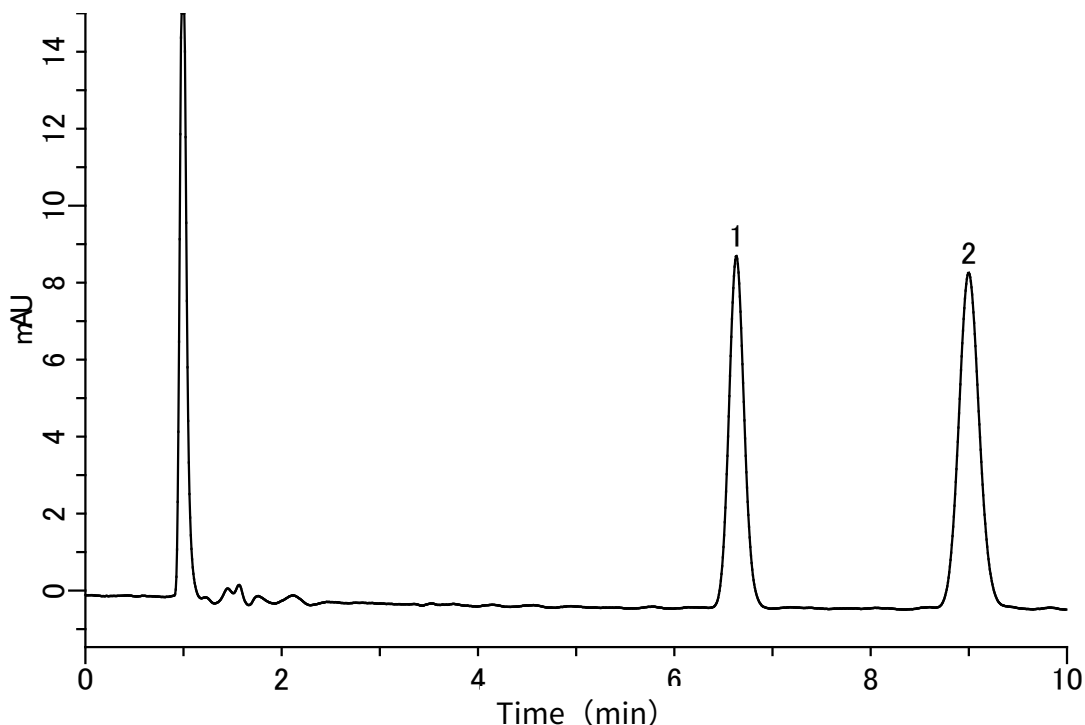


# InertSearch™ for LC

Inertsil® Applications

## Analysis of Histamine and Thiamine (InertSustain C18)

Data No. LA949-0142



### Conditions

**System** : GL-7400 HPLC system  
**Column** : InertSustain C18 (5 µm, 150 x 3.0 mm I.D.)  
**Column Cat. No.** : 5020-07325  
**Eluent** : A) CH<sub>3</sub>CN  
B) 20 mM NaH<sub>2</sub>PO<sub>4</sub>, 10 mM IPCC-08 (pH 2.2, H<sub>3</sub>PO<sub>4</sub>)  
(IPCC-08: Sodium 1-Octanesulfonate)  
A/B = 20/80, v/v  
**Flow Rate** : 0.6 mL/min  
**Col. Temp.** : 40 °C  
**Detection** : UV 220 nm (GL-7452A PDA Detector)  
**Injection Vol.** : 2 µL  
**Sampe** : Standard

### Analyte:

1. Histamine (20 µg/mL)  
2. Thiamine (20 µg/mL)