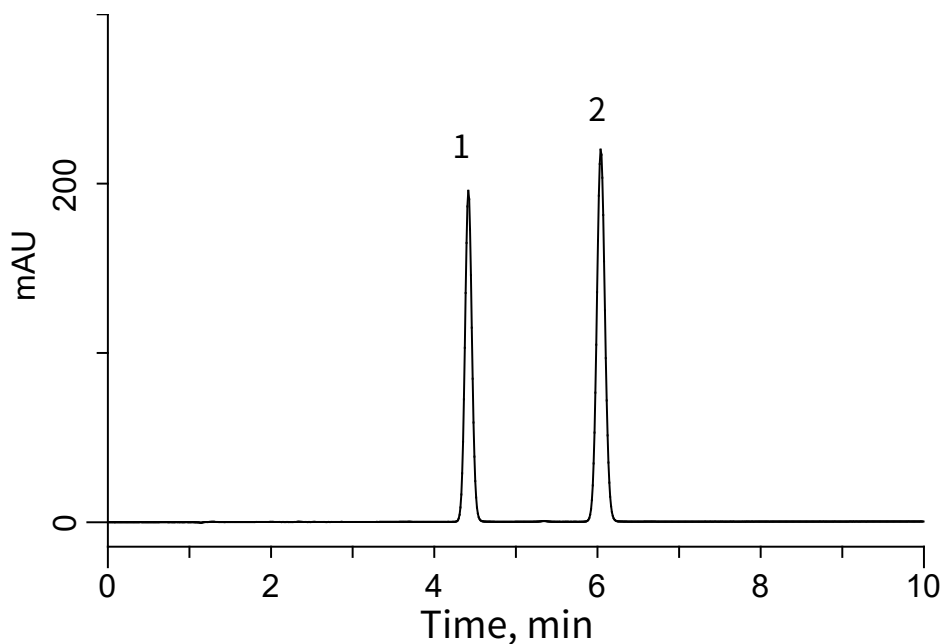


Analysis of Glyburide

(Under the Condition of USP 39-NF34)

Data No. LB458-0919



Conditions

System : GL7700 HPLC system
Column : Inertsil C8
(5 µm, 250 x 4.6 mm I.D.)
Column Cat. No. : 5020-01228
Eluent : A) CH₃CN
B) 2.6 g/L NH₄H₂PO₄ in H₂O
A/B = 55/45, v/v
Flow Rate : 2.0 mL/min
Col. Temp. : 40 °C
Detection : UV 254 nm (PD7752 PDA Detector)
Injection Vol. : 10 µL
Sample : Standard

Analyte:

1. Glyburide	0.42 mg/mL
2. Progesterone	0.17 mg/mL
Resolution (1, 2)	: 9.30 (≥ 5.0)
RSD of the 1 area (%) (n=5)	: 0.14 (≤ 2.0)