

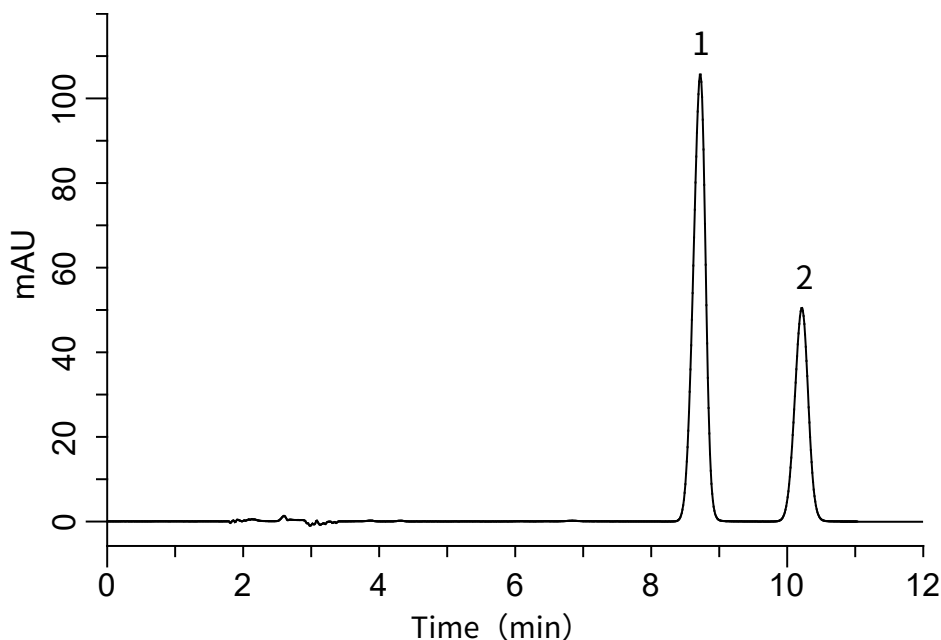
InertSearch™ for LC

Inertsil® Applications

Analysis of Glycyrrhetic acid

(Under the Condition of the Japanese Standards of Quasi-drug Ingredients, Monoammonium α -Glycyrrhizinate)

Data No. LB518-0919

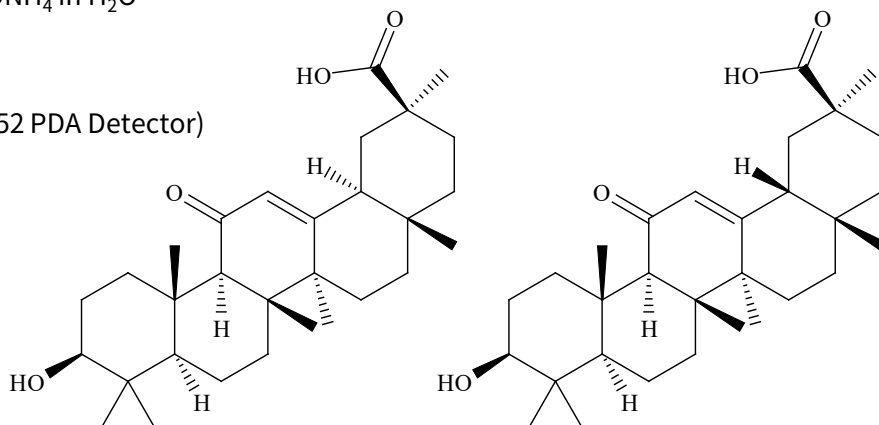


Conditions

System : GL7700 HPLC system
Column : InertSustain C18
(5 μ m, 250 x 4.6 mm I.D.)
Column Cat. No. : 5020-07346
Eluent : A) CH₃CN
B) 15 mM CH₃COONH₄ in H₂O
A/B = 55/45, v/v
Flow Rate : 1.0 mL/min
Col. Temp. : 40 °C
Detection : UV 250 nm (PD7752 PDA Detector)
Injection Vol. : 20 μ L
Sample : Standard

Analyte:

1. α -Glycyrrhetic acid 40 mg/L
2. β -Glycyrrhetic acid 20 mg/L



1. α -Glycyrrhetic acid

2. β -Glycyrrhetic acid

Analysis of Glycyrrhetic acid

(Under the Condition of the Japanese Standards of Quasi-drug Ingredients, Monoammonium α -Glycyrrhizinate)

Data No. LBxxx-0919

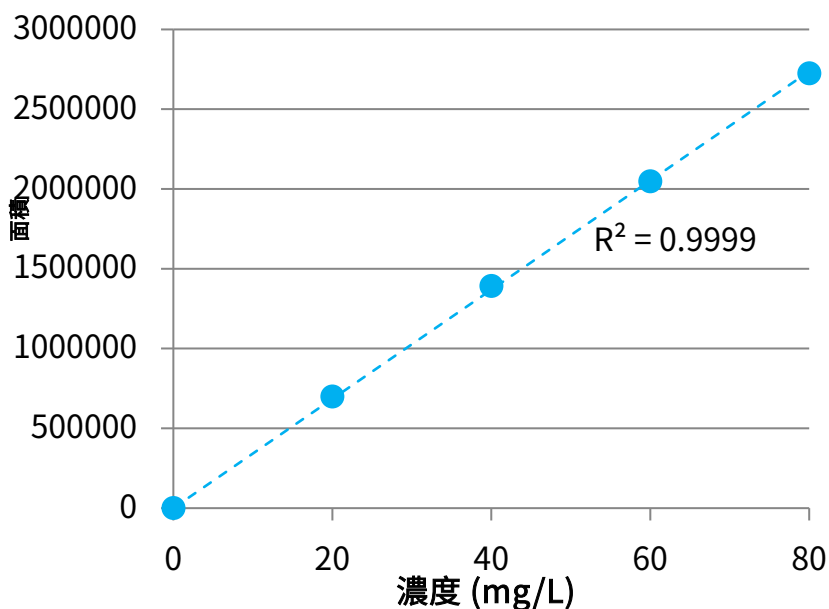


Fig.1 Calibration curve of α -Glycyrrhetic acid

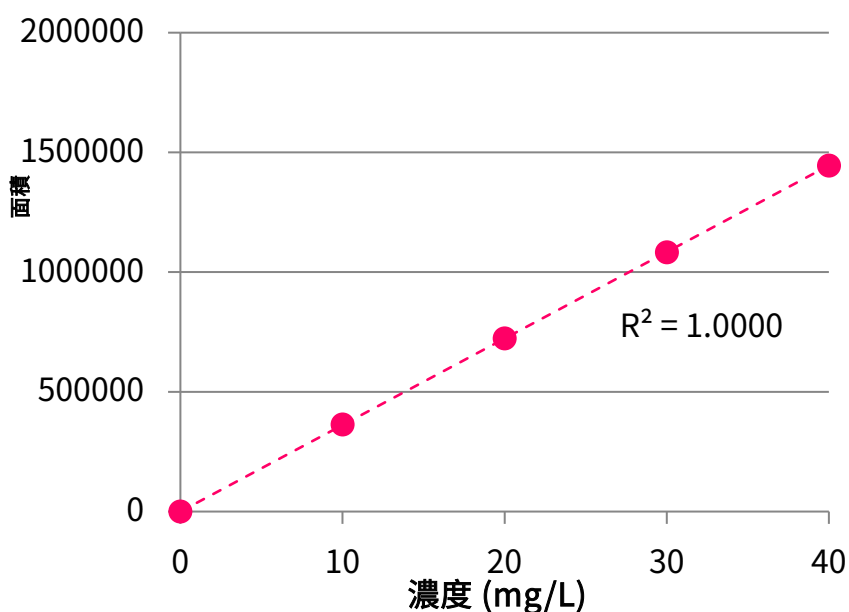


Fig.2 Calibration curve of β -Glycyrrhetic acid