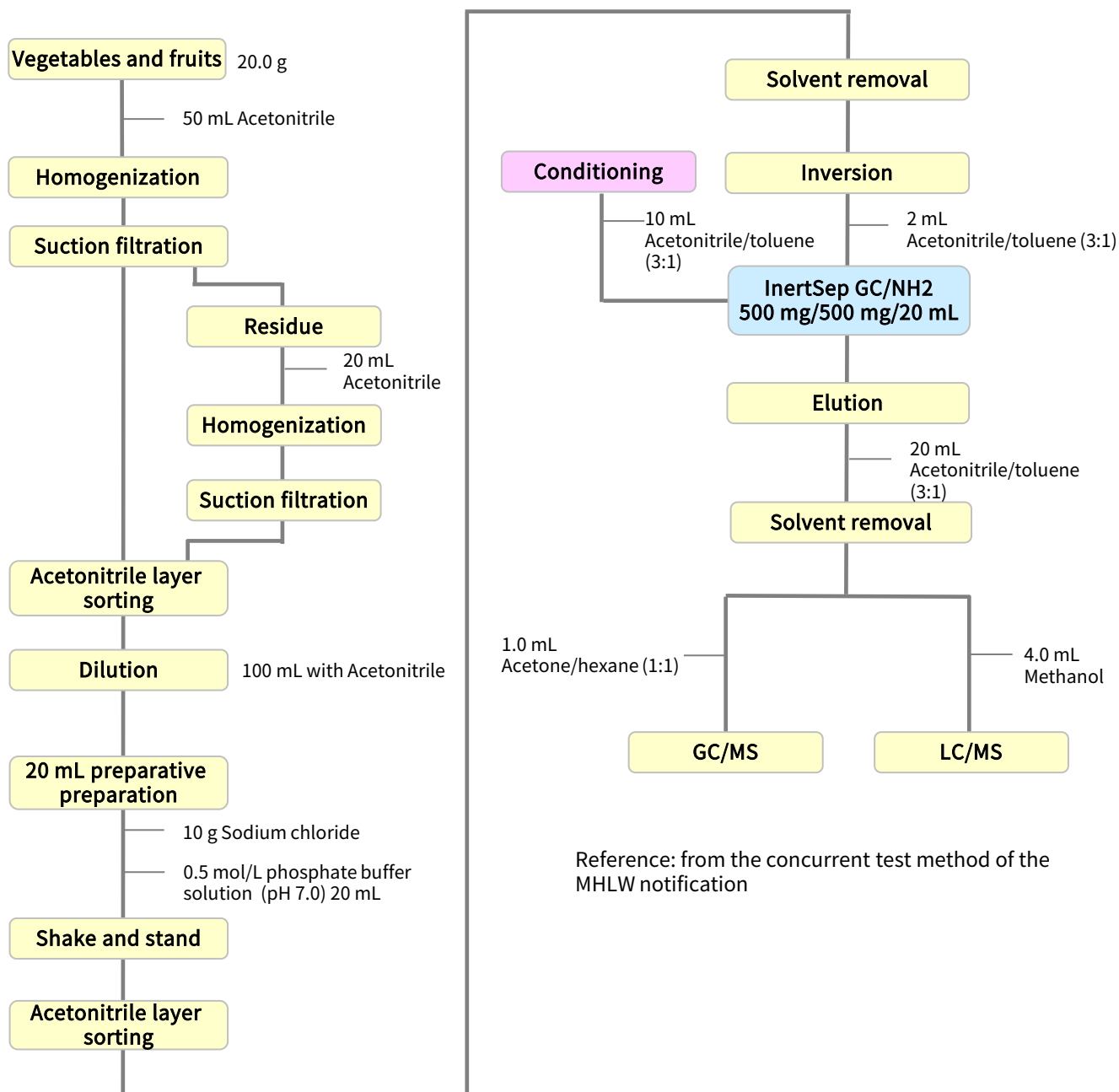


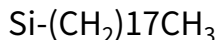
The Food Sanitation Law was amended in May 2003, and pesticides, etc. were regulated under the positive list system from May 2006. This test method introduces the pretreatment of crops for residual pesticide analysis by GC/MS and LC/MS, which were included in the notification of the positive list system.

## 1. Flow diagram of solid phase pretreatment



## 2. Solid-phase extraction-related products

### [InertSep C18]



Mean particle size : 60 μm  
 Carbon : 19 %  
 End-capping : Highly End-capping  
 Surface Area : 450 m<sup>2</sup>/g  
 Pore volume : 0.7 mL/g  
 Pore size : 60 Å  
 PH range of use : 2 - 8

InertSep C18 is a solid phase with non-polar interaction in which octadecyl groups are chemically bonded to silica gel. Residual silanol groups prevents cation exchange interactions, resulting in reduced adsorption of basic compounds.

It is suitable as a clean-up solid phase for removing lipids in the concurrent test method for residual pesticides.

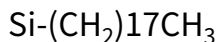
#### Syringe barrel type cartridge

Product name	Column size	Qty.	Cat.No.
InertSep C18	1 g / 6 mL	30 bottles	5010-61005
	1 g / 12 mL	20 bottles	5010-61015
	1 g / 20 mL	20 bottles	5010-61014

### [InertSep C18/DRY]

InertSep C18 DRY is a clean-up cartridge with two layers: delipidating C18 and dehydrating DRY. It is used for pretreatment of residual agricultural chemicals prior to analysis.

#### InertSep C18



Mean particle size : 60 μm  
 Carbon : 19 %  
 End-capping : Highly End-capping  
 Surface Area : 450 m<sup>2</sup>/g  
 Pore volume : 0.7 mL/g  
 Pore size : 60 Å  
 PH range of use : 2 - 8

#### InertSep DRY



#### Syringe barrel type cartridge

Product name	Column size	Qty.	Cat.No.
InertSep C18/DRY <small>Recommended for this application</small>	1 g / 3 g / 12 mL	20 bottles	5010-68133

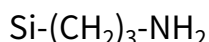
### [InertSep GC/NH2]

This is a two layer clean-up solid-phase with decolorizing GC and NH2 and PSA providing purification that is not achievable using the GC phase alone

#### InertSep GC

Material : Graphite Carbon  
 Mean particle size : 120 - 400 mesh  
 Surface Area : 85 m<sup>2</sup>/g  
 Pore capacity : 1.0 mL/g  
 Pore size : 450 Å

#### InertSep NH2



Mean particle size : 60 μm  
 Carbon : 10 %  
 Surface Area : 450 m<sup>2</sup>/g  
 Pore volume : 0.7 mL/g  
 Pore size : 60 Å  
 Ion exchange capacity : 0.9 meq/g  
 PH range of use : 2 - 8

#### Syringe barrel type cartridge

Product name	Column size	Qty.	Cat.No.
InertSep C18	500 mg / 500 mg / 6 mL	30 bottles	5010-68022
	500 mg / 500 mg / 20 mL	20 bottles	5010-68024
	1 g / 1 g / 20 mL	20 bottles	5010-68025

GL Sciences disclaims any and all responsibility for any injury or damage which may be caused by this data directly or indirectly. We reserve the right to amend this information or data at any time and without any prior announcement.

#### GL Sciences Inc. Japan

22-1 Nishishinjuku 6-chome  
 Shinjuku-ku, Tokyo  
 163-1130, Japan

Phone: +81-3-5323-6620  
 Fax: +81-3-5323-6621  
 Email: [world@glsciences.jp](mailto:world@glsciences.jp)  
 Web: [www.glsciences.com](http://www.glsciences.com)

#### GL Sciences Inc. USA

4733 Torrance Blvd. Suite 255  
 Torrance, CA 90503  
 USA

Phone: +1-310-265-4424  
 Fax: +1-310-265-4425  
 Email: [info@glsciencesinc.com](mailto:info@glsciencesinc.com)  
 Web: [www.glsciencesinc.com](http://www.glsciencesinc.com)

#### GL Sciences B.V.

Dillenburgstraat 7C  
 5652AM, Eindhoven  
 The Netherlands

Phone: +31-40-254-9531  
 Email: [info@glsciences.eu](mailto:info@glsciences.eu)  
 Web: [www.glsciences.eu](http://www.glsciences.eu)

#### GL Sciences (Shanghai) Limited

Tower B, Room 2003  
 Far East International Plaza  
 No.317 Xianxia Road, Changning District  
 Shanghai, China 200051

Phone: +86-21-62782272  
 Email: [contact@glsciences.com.cn](mailto:contact@glsciences.com.cn)  
 Web: [www.glsciences.com.cn](http://www.glsciences.com.cn)



#### International Distributors

Visit our Website at [www.glsciences.com/distributors](http://www.glsciences.com/distributors)