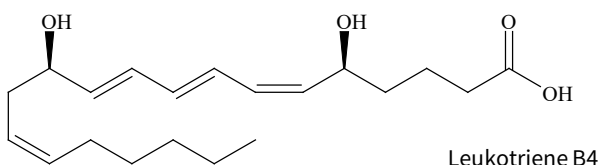


Leukotrienes (Leukotriene) are biologically active compounds synthesized in cells from arachidonic acid by 5-lipoxygenase. Six classes of leukotrienes are involved in bronchial asthma and allergic reactions: LTA₄, LTB₄, LTC₄, LTD₄, LTE₄, and LTF₄. LTB₄, in particular, has been measured biochemically because it is a target for labeling in learning the functions of inflammatory response.

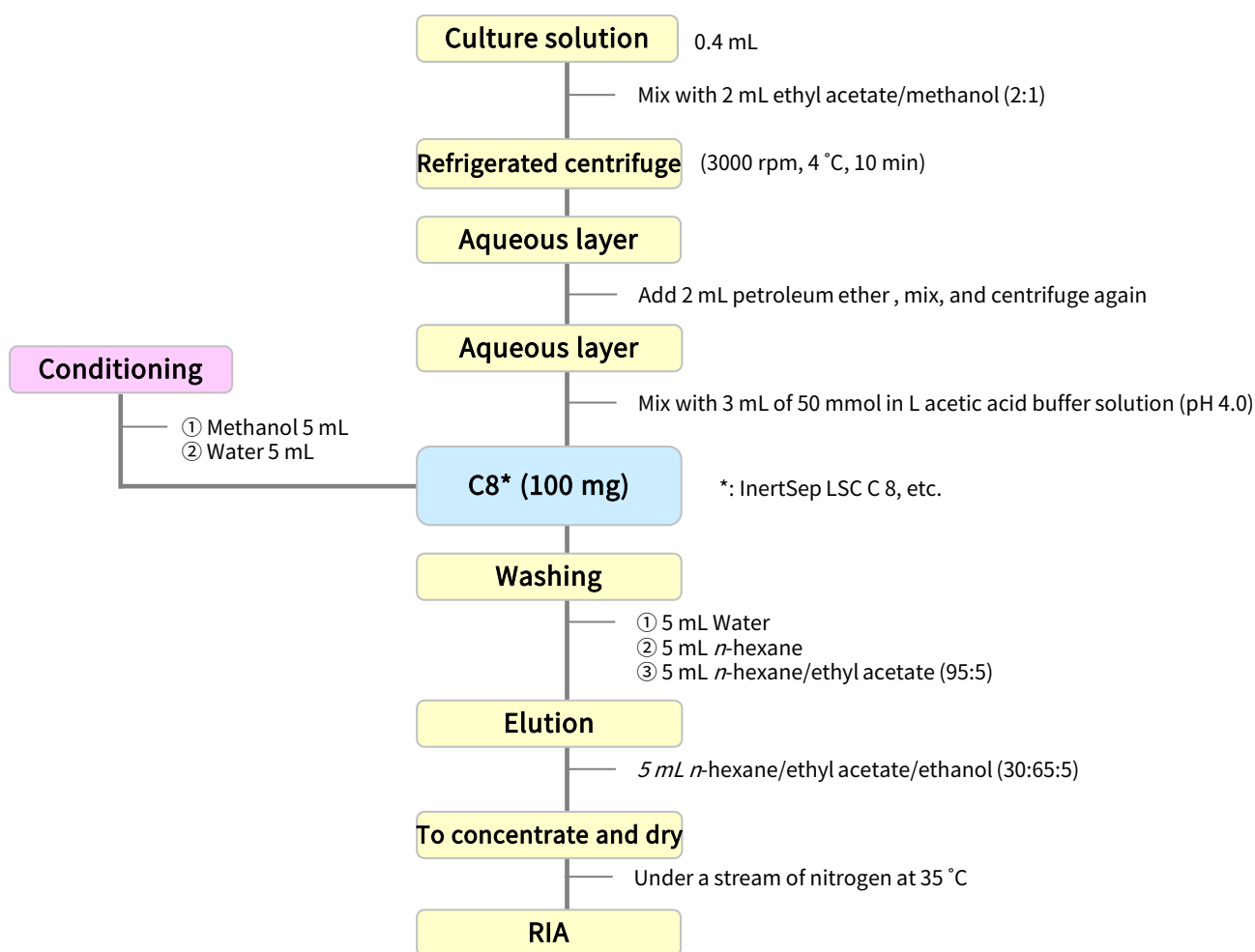
1. Flow diagram of solid phase pretreatment

[Structure of leukotriene B₄]



Structures are created using Chemistry 4-D Draw which is provided by ChemInnovation Software, Inc.

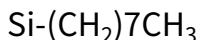
[Example: pretreatment of leukotriene B₄]



Reference: Acta Obst Gynaec Jpn., Vol. 42 (1990).

2. Solid-phase extraction-related products

[InertSep C8]



Mean particle size : 60 μm
 Carbon : 12 %
 End-caps : Middle End-Capping
 Surface Area : 450 m²/g
 Pore volume : 0.7 mL/g
 Pore size : 60 Å
 PH range of use : 2 - 8

InertSep C8 has an octyl group that is attached to silica gel and is a solid phase with less polar nonpolar interaction than C18. It is suitable for highly hydrophobic compounds that are retained too strongly with C18. Advanced end-capping prevents cation-exchange interactions with silanol groups, resulting in less adsorption of basic compounds.

Large size cartridge LSC

Product name	Column size	Qty.	Cat.No.
InertSep LSC C8	100 mg	50 bottles	5010-63081
	200 mg	50 bottles	5010-63082
	500 mg	50 bottles	5010-63083

Recommendation
for this study

GL Sciences disclaims any and all responsibility for any injury or damage which may be caused by this data directly or indirectly. We reserve the right to amend this information or data at any time and without any prior announcement.

GL Sciences Inc. Japan

22-1 Nishishinjuku 6-chome
 Shinjuku-ku, Tokyo
 163-1130, Japan

Phone: +81-3-5323-6620
 Fax: +81-3-5323-6621
 Email: world@glsc.co.jp
 Web: www.glsciences.com

GL Sciences Inc. USA

4733 Torrance Blvd. Suite 255
 Torrance, CA 90503
 USA

Phone: +1-310-265-4424
 Fax: +1-310-265-4425
 Email: info@glsciencesinc.com
 Web: www.glsciencesinc.com

GL Sciences B.V.

Dillenburgstraat 7C
 5652AM, Eindhoven
 The Netherlands

Phone: +31-40-254-9531
 Email: info@glsciences.eu
 Web: www.glsciences.eu

GL Sciences (Shanghai) Limited

Tower B, Room 2003
 Far East International Plaza
 No.317 Xianxia Road, Changning District
 Shanghai, China 200051

Phone: +86-21-62782272
 Email: contact@glsciences.com.cn
 Web: www.glsciences.com.cn



International Distributors

Visit our Website at www.glsciences.com/distributors