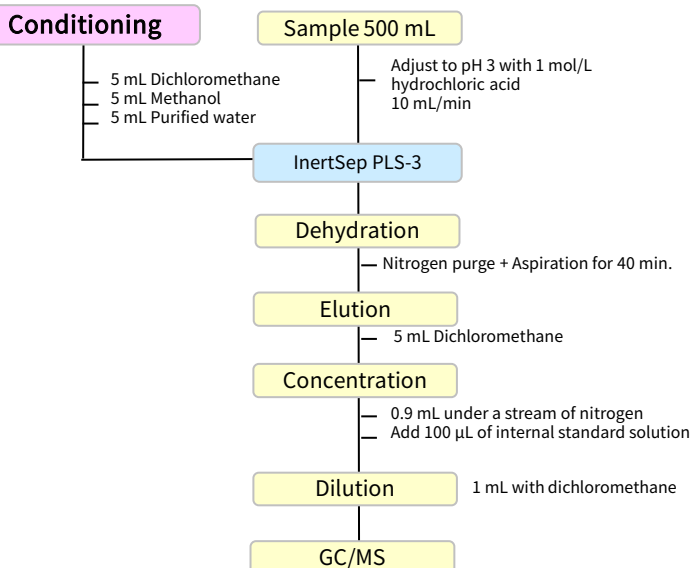


Solid Phase Extraction of Prothiophos Prothiofos Oxon - Analysis using GC/MS

Prothiofos Oxone, a metabolite of prothiophos described in Appendix Method 25 and was added as a target analyte in the Notification dated March 28, 2018 and enforced April 1, 2018.

Analytical methods are the same as before, and solid-phase extraction using a reversed-phase solid-phase method is used for determination by GC/MS.

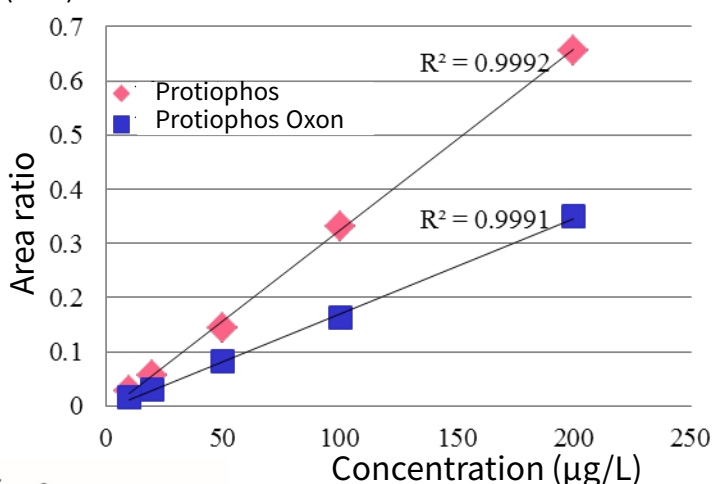
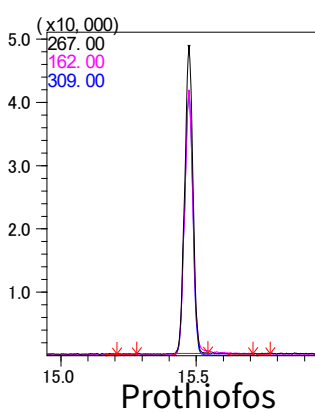
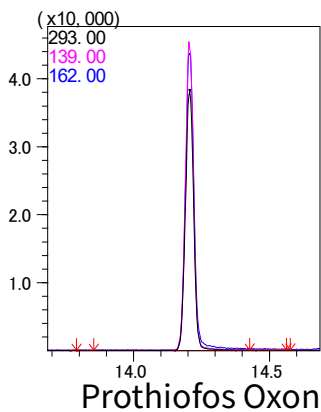
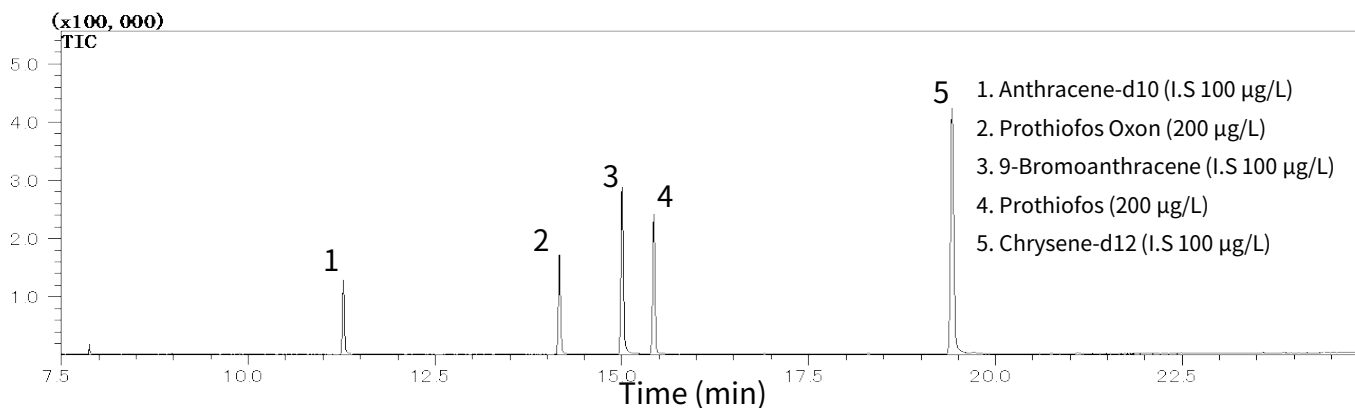
Example of Measurement Flow (Appendix Method 25)



Example of analytical conditions for GC/MS

System	: GC-MS
Column	: InertCap 5MS/NP 0.25 mm I.D. x 30 m df = 0.25 μ m
Col. Temp.	: 50 °C (1 min hold) - 20 °C/min - 200 °C - 5 °C/min - 300 °C (1 min hold)
Carrier Gas	: He 1.2 mL/min
Injection	: Splitless 250 °C
Liner	: Splitless liners
Detection	: MS SIM
	Interface Temp. 280 °C
Sample Size	: 0.2 μ g/mL in Dichloromethane
Inj. Vol.	: 2 μ L

e.g. chromatograms (0.2 μ g/mL of mixed standard)



2. Related products

<GC/MS-related products>

Analytical capillary column



Column name (Liquid phase)	Internal diameter (mm)	Length (m)	Film thickness (μm)	Maximum operating temperature ($^{\circ}\text{C}$)	Cat.No.
InertCap 5MS/NP	0.25	30	0.25	Iso.325- prog.350	1010-18642

<Products for Solid Phase Extraction>

Solid-phase extraction columns



Product name	Size	Qty.	Cat.No.
InertSep SlimJ PLS-3	230 mg	50 bottles	5010-25200
		500 bottles	5010-25205

GL Sciences disclaims any and all responsibility for any injury or damage which may be caused by this data directly or indirectly. We reserve the right to amend this information or data at any time and without any prior announcement.

GL Sciences Inc. Japan

22-1 Nishishinjuku 6-chome
Shinjuku-ku, Tokyo
163-1130, Japan

Phone: +81-3-5323-6620
Fax: +81-3-5323-6621
Email: world@glsc.co.jp
Web: www.glsciences.com

GL Sciences Inc. USA

4733 Torrance Blvd. Suite 255
Torrance, CA 90503
USA

Phone: +1-310-265-4424
Fax: +1-310-265-4425
Email: info@glsciencesinc.com
Web: www.glsciencesinc.com

GL Sciences B.V.

Dillenburgstraat 7C
5652AM, Eindhoven
The Netherlands

Phone: +31-40-254-9531
Email: info@glsciences.eu
Web: www.glsciences.eu

GL Sciences (Shanghai) Limited

Tower B, Room 2003
Far East International Plaza
No.317 Xianxia Road, Changning District
Shanghai, China 200051

Phone: +86-21-62782272
Email: contact@glsciences.com.cn
Web: www.glsciences.com.cn



GL Sciences
International Distributors

Visit our Website at www.glsciences.com/distributors