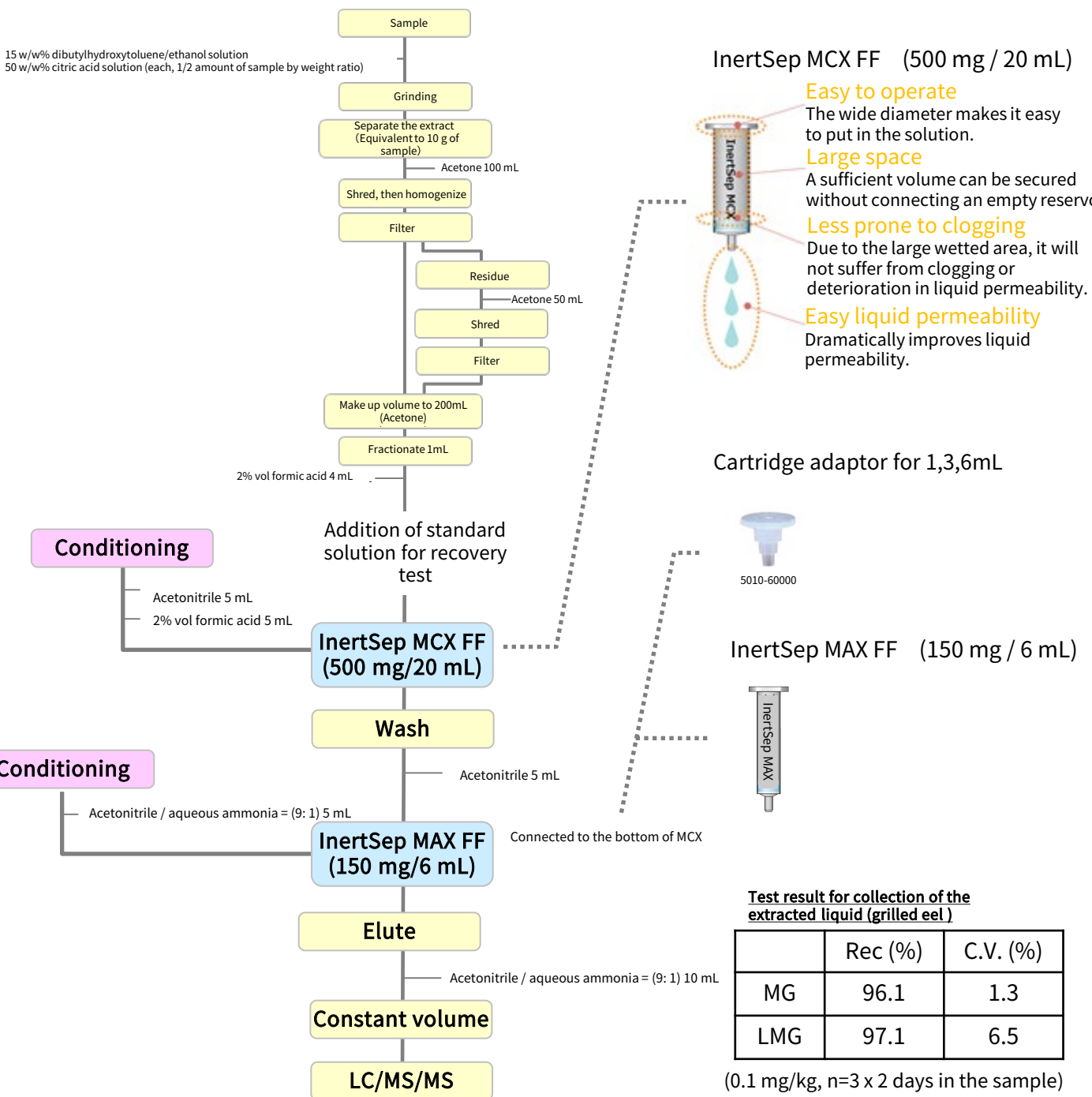


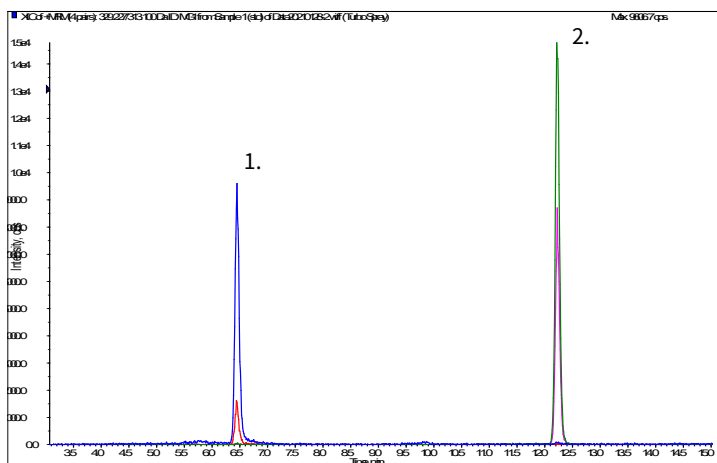
Malachite Green (MG) is a blue-green basic pigment that is used as a remedy against aquatic fungal diseases, it is also used as a bactericidal agent for farmed fish. Current research suggests that it may be carcinogenic, therefore use in foods has been banned in the United States, EU, etc. The distribution and sale of foods in which malachite green is detected is banned in Japan. However, since on rare occasions violations of this ban are confirmed in imported foods, etc., tests are widely conducted by inspection organizations. In this study, malachite green and its biotransform Leucomalachite Green (LMG) were extracted from grilled eel extract and purified using a mixed-mode polymer solid phase (InertSep MCX FF, LMG) and then analyzed by LC / MS / MS with a test method complied with Notification of the Ministry of Health, Labor and Welfare.

1. Flow Chart of Solid Phase Pretreatment



2. Measurement Conditions

Example: measurement of standard solution



HPLC conditions

Column : InertSustainSwift C18
(5 μm, 150 x 2.1 mm I.D.)

Eluent : A) 50 mM HCOONH₄ in H₂O (pH 3.5)
B) CH₃CN

Time (min)	A%	B%
0.0	70	30
15.0	10	90
25.0	10	90

Flow rate : 0.4 mL/min

Column : 40 °C
temperature

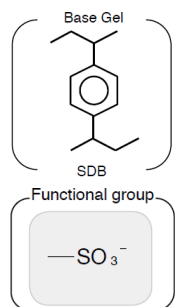
Detection : LC-MS/MS
(4000QTRAP: ESI, Positive, SRM)

Injection Vol.: 10 μL

Sample : 1. Malachite Green Q1/Q3=329/313 (Quantitation ions)
329/165 (Reference ions)
2. Leucomalachite Green Q1/Q3=331/316 (Quantitation ions)
331/239 (Reference ions)
(0.5 μg/L each)

3. Solid-phase Extraction Column

[InertSep MCX FF]

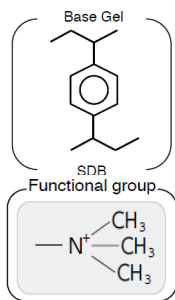


Average particle size : 70 μm
Surface area : 480 m²/g
Pore volume : 1.1 mL/g
Pore size : 9 nm
pH range : 1~14

InertSep MCX FF is a styrene-divinylbenzene polymer (SDB) solid phase modified with a strong cation exchange group. By exerting both a reverse-phase and cation exchange action, basic compounds can be strongly retained, making it extremely effective for the separation of acidic and neutral contaminants. Since the particle size is as large as 70 μm, it is ideal for biological sample extracts.

Description	Column size	Q' ty/pkg	Cat.No.
InertSep MCX FF	500 mg/20 mL	20pcs/pkg	5010-62704

[InertSep MAX FF]



Average particle size : 70 μm
Surface area : 480 m²/g
Pore volume : 1.1 mL/g
Pore size : 9 nm
pH range : 1~14

InertSep MAX FF is a styrene-divinylbenzene polymer (SDB) solid phase modified with a strong anion exchange group. By exerting both a reverse-phase and anion exchange action, acidic compounds can be strongly retained, making it extremely effective for the separation of basic and neutral contaminants. Since the particle size is as large as 70 μm, it is ideal for biological sample extracts.

Description	Column size	Q' ty/pkg	Cat.No.
InertSep MAX FF	150 mg/6 mL	30pcs/pkg	5010-62741

GL Sciences disclaims any and all responsibility for any injury or damage which may be caused by this data directly or indirectly. We reserve the right to amend this information or data at any time and without any prior announcement.

GL Sciences Inc. Japan

22-1 Nishishinjuku 6-chome
Shinjuku-ku, Tokyo
163-1130, Japan

Phone: +81-3-5323-6620
Fax: +81-3-5323-6621
Email: world@glsc.co.jp
Web: www.glsciences.com

GL Sciences Inc. USA

4733 Torrance Blvd. Suite 255
Torrance, CA 90503
USA

Phone: +1-310-265-4424
Fax: +1-310-265-4425
Email: info@glsciencesinc.com
Web: www.glsciencesinc.com

GL Sciences B.V.

Dillenburgstraat 7C
5652AM, Eindhoven
The Netherlands

Phone: +31-40-254-9531
Email: info@glsciences.eu
Web: www.glsciences.eu

GL Sciences (Shanghai) Limited

Tower B, Room 2003
Far East International Plaza
No.317 Xianxia Road, Changning District
Shanghai, China 200051

Phone: +86-21-62782272
Email: contact@glsciences.com.cn
Web: www.glsciences.com.cn



International Distributors

Visit our Website at www.glsciences.com/distributors