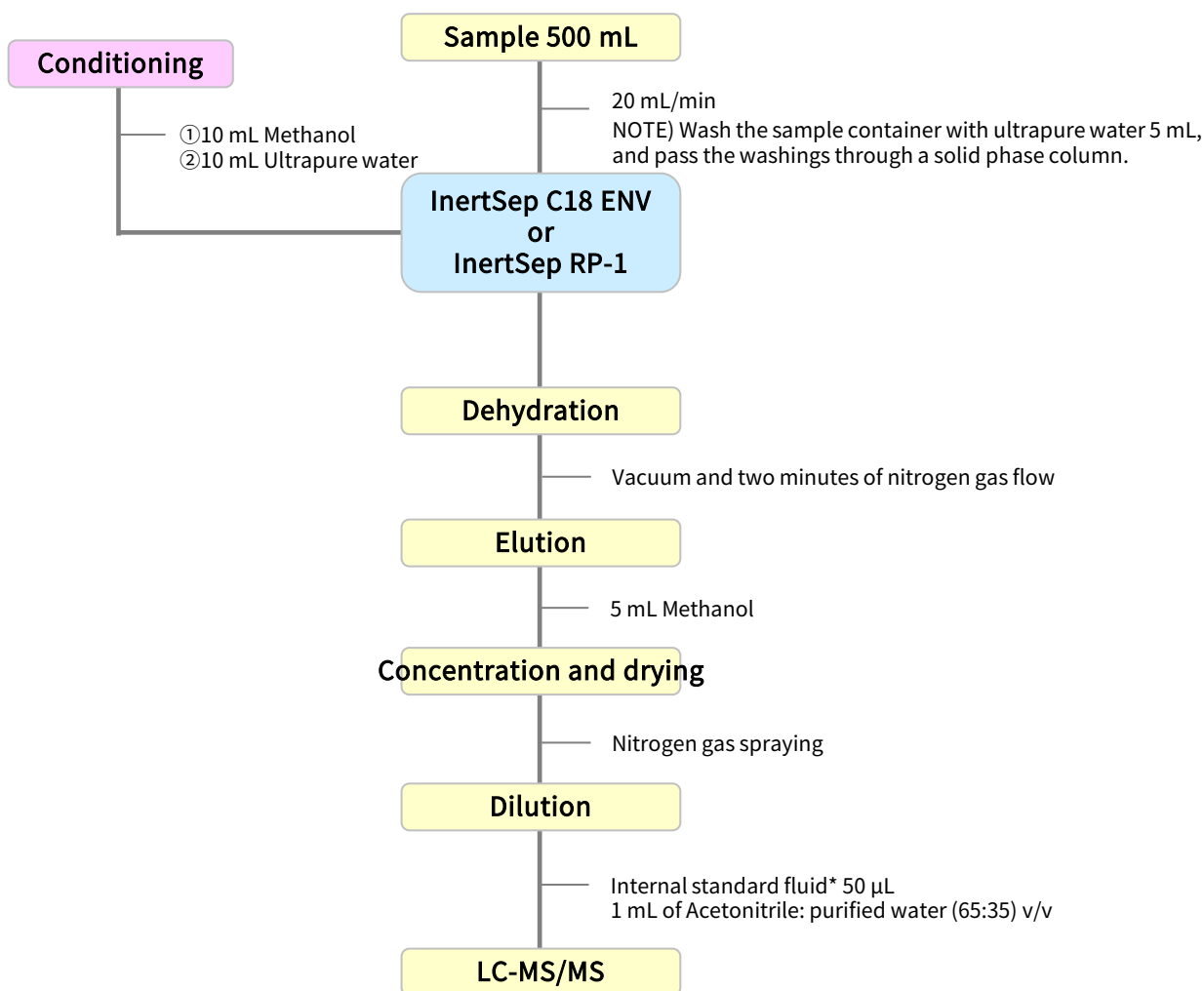


Analysis of Linear Alkylbenzenesulfonic Acid and its Salts in Environmental Water (LC/MS (/MS) method)

Linear alkylbenzenesulfonic acid is regarded as a chemical that may interfere with the habitat or growth of aquatic organisms. It was added to the environmental quality standard items for the conservation of aquatic life (announced and enforced on March 27, 2013). It is now considered to be necessary to reduce the concentration of this compound in public waters nationwide.

Analytical methods employ a reversed-phase solid-phase extraction method with quantification by LC/MS/MS.

1. Flow diagram of solid phase pretreatment

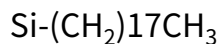


*:Sodium octylbenzenesulfonate (C8-LAS)

Reference: Environmental Quality Standards for Water Pollution (Appendix 12) issued by the Ministry of the Environment

2. Products for solid-phase extraction

[InertSep C18 ENV]



InertSep C18 ENV is a C18 solid phase developed for water quality analysis; it can be used for anionic surfactant pre-treatment of water samples.

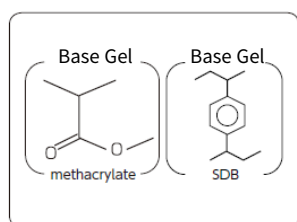
Syringe barrel type cartridge

Product name	Column size	Qty.	Cat.No.
InertSep C18 ENV	500 mg/6 mL	30 bottles	5010-61204

Luer device cartridge

Product name	Column size	Qty.	Cat.No.
InertSep SlimJ C18 ENV	500 mg	50 bottles	5010-65200
	1000 mg	50 bottles	5010-65201

[InertSep RP-1]



Mean particle size : 70 μm
 Surface Area : 650 m^2/g
 Pore volume : 1.5 mL/g
 Pore size : 90 \AA
 PH range of use : 1 - 14

InertSep RP 1 is a polymeric solid phase based on SDB and methacrylate. It is optimal for enrichment of a wide range of compounds from low to medium high polarity.

Syringe barrel type cartridge

Product name	Column size	Qty.	Cat.No.
InertSep RP-1	250 mg/6 mL	30 bottles	5010-27000
	500 mg/6 mL	30 bottles	5010-27004
	500 mg/12 mL	20 bottles	5010-27005

Luer device cartridge

Product name	Column size	Qty.	Cat.No.
InertSep mini RP-1	230 mg	50 bottles	5010-27200
		500 bottles	5010-27220

GL Sciences disclaims any and all responsibility for any injury or damage which may be caused by this data directly or indirectly. We reserve the right to amend this information or data at any time and without any prior announcement.

GL Sciences Inc. Japan

22-1 Nishishinjuku 6-chome
 Shinjuku-ku, Tokyo
 163-1130, Japan

Phone: +81-3-5323-6620
 Fax: +81-3-5323-6621
 Email: world@glsc.co.jp
 Web: www.glsciences.com

GL Sciences Inc. USA

4733 Torrance Blvd. Suite 255
 Torrance, CA 90503
 USA

Phone: +1-310-265-4424
 Fax: +1-310-265-4425
 Email: info@glsciencesinc.com
 Web: www.glsciencesinc.com

GL Sciences B.V.

Dillenburgstraat 7C
 5652AM, Eindhoven
 The Netherlands

Phone: +31-40-254-9531
 Email: info@glsciences.eu
 Web: www.glsciences.eu

GL Sciences (Shanghai) Limited

Tower B, Room 2003
 Far East International Plaza
 No.317 Xianxia Road, Changning District
 Shanghai, China 200051

Phone: +86-21-62782272
 Email: contact@glsciences.com.cn
 Web: www.glsciences.com.cn



International Distributors

Visit our Website at www.glsciences.com/distributors