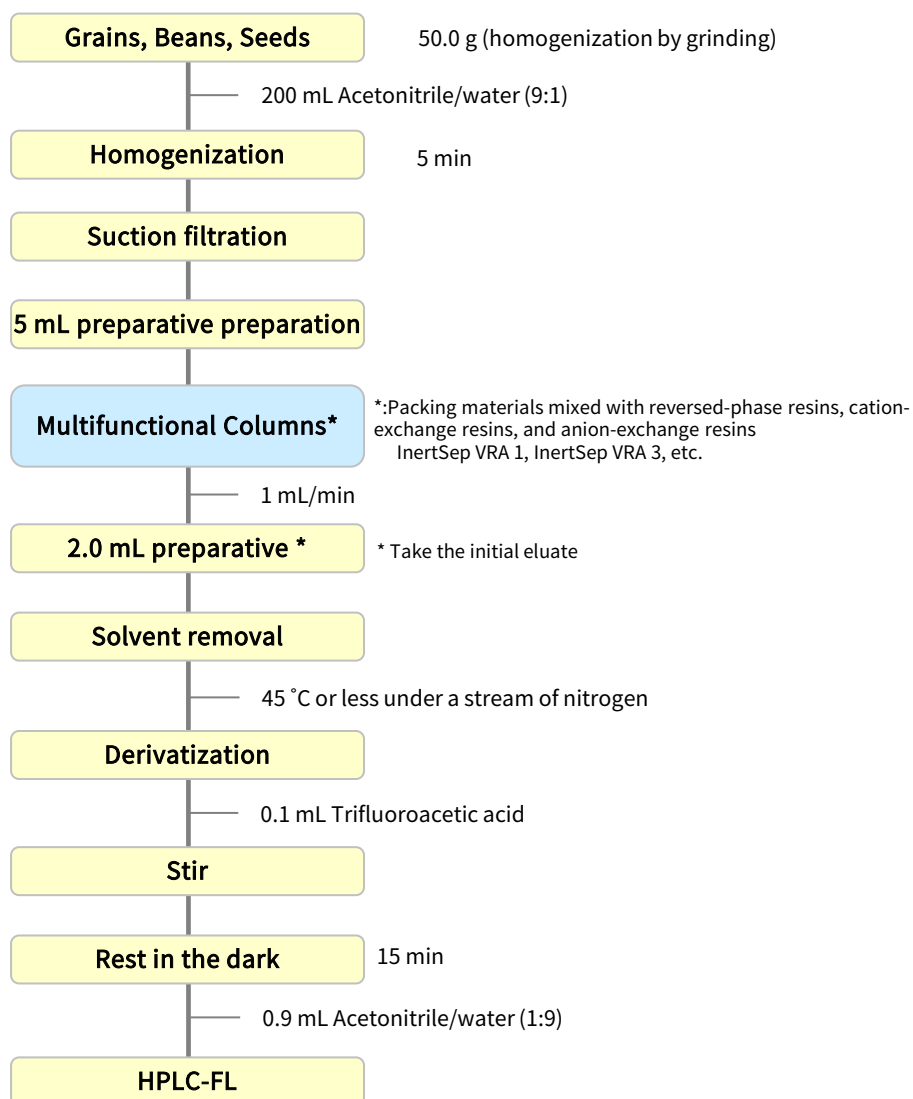


Aflatoxins are mycotoxins produced by molds. HPLC methods are used to analyze them and to reduce the impact of contaminants, pretreatment is required for sample cleanup.

InertSep VRA series for food analysis is a multifunctional Mini-Column (Clean-Up Cartridge) useful for cleanup of mycotoxins and other compounds. VRA-1 is a useful phase for common cereals, and VRA-3 reverse-phase-enriched phase is suited to oil-rich beans.

## 1. Flow diagram of solid phase pretreatment



Reference: Ministry of Health, Labour and Welfare Food Safety Notification No. 0816-2

## 2. Products for solid-phase extraction

### [InertSep VRAs Series]

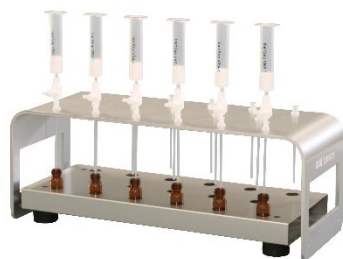
This is a multifunctional (multi-function) solid-phase minicolumn dedicated to clean-up processing of organic compounds from high-matrix samples.

#### Syringe barrel type cartridge

Product name	Detailed	Column Size	Qty.	Cat.No.
InertSep VRA-1	Mixed mode of reversed phase + ion exchange layer	6mL	30 bottles	5010-68140
InertSep VRA-2	Economy version of VRA-1	6mL	30 bottles	5010-68141
InertSep VRA-3	<span style="background-color: #f8d7da; padding: 2px;">Recommendation for this study</span> Reversed-phase-enriched form of VRA-1	6mL	30 bottles	5010-68142

### [Gravity Flow Manifold]

This is a Free fall manifold that can use multifunctional mini column for aflatoxin pretreatment and 4 mL vial as a receptacle.



Product name	Qty.	Cat.No.
GL-SPE Gravity Flow Manifold	Formula 1	5010-50430
GL-SPE 4 mL vial tray for Gravity Flow Manifold	One unit	5010-50432
Luer stop valve (made of PTFE)	12	5010-60010

GL Sciences disclaims any and all responsibility for any injury or damage which may be caused by this data directly or indirectly. We reserve the right to amend this information or data at any time and without any prior announcement.

#### **GL Sciences Inc. Japan**

22-1 Nishishinjuku 6-chome  
Shinjuku-ku, Tokyo  
163-1130, Japan

Phone: +81-3-5323-6620  
Fax: +81-3-5323-6621  
Email: [world@glsc.co.jp](mailto:world@glsc.co.jp)  
Web: [www.glsciences.com](http://www.glsciences.com)

#### **GL Sciences Inc. USA**

4733 Torrance Blvd. Suite 255  
Torrance, CA 90503  
USA

Phone: +1-310-265-4424  
Fax: +1-310-265-4425  
Email: [info@glsciencesinc.com](mailto:info@glsciencesinc.com)  
Web: [www.glsciencesinc.com](http://www.glsciencesinc.com)

#### **GL Sciences B.V.**

Dillenburgstraat 7C  
5652AM, Eindhoven  
The Netherlands

Phone: +31-40-254-9531  
Email: [info@glsciences.eu](mailto:info@glsciences.eu)  
Web: [www.glsciences.eu](http://www.glsciences.eu)

#### **GL Sciences (Shanghai) Limited**

Tower B, Room 2003  
Far East International Plaza  
No.317 Xianxia Road, Changning District  
Shanghai, China 200051

Phone: +86-21-62782272  
Email: [contact@glsciences.com.cn](mailto:contact@glsciences.com.cn)  
Web: [www.glsciences.com.cn](http://www.glsciences.com.cn)



#### **International Distributors**

Visit our Website at [www.glsciences.com/distributors](http://www.glsciences.com/distributors)